

SINGAPORE MANAGEMENT UNIVERSITY

IN PARTNERSHIP WITH

CONSTRUCTION COMPANY

Automation | In-depth Analysis | Dashboarding

PROBLEM STATEMENT

Design & develop a dashboard to enable effective tracking of historical financial performance

Provide analytical insights to address areas of concern and allow sensitivity studies to be incorporated

AUTOMATION



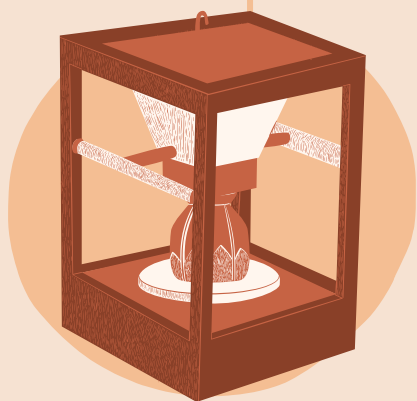
Python scripts were created to mimic the data transformation of raw data into PowerBI format. This enable the company to reduce their initial 2-3 days of manual copying & pasting to just under 20-30 seconds. Thus, improving their efficiency.

IN-DEPTH ANALYSIS

Introducing group level performance against the company's competitors allows the company to understand their positioning. Additionally, we included a sensitivity analysis tool to help generate what-ifs scenario based on their expenses incurred to show their cash flow position. Hence, this allows in-depth analysis for the company

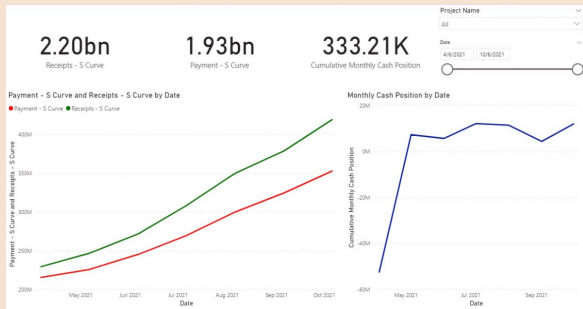
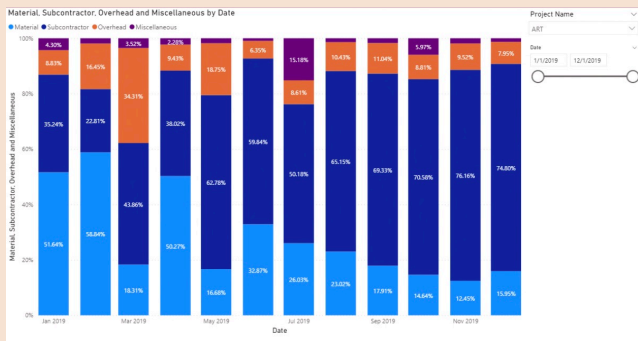
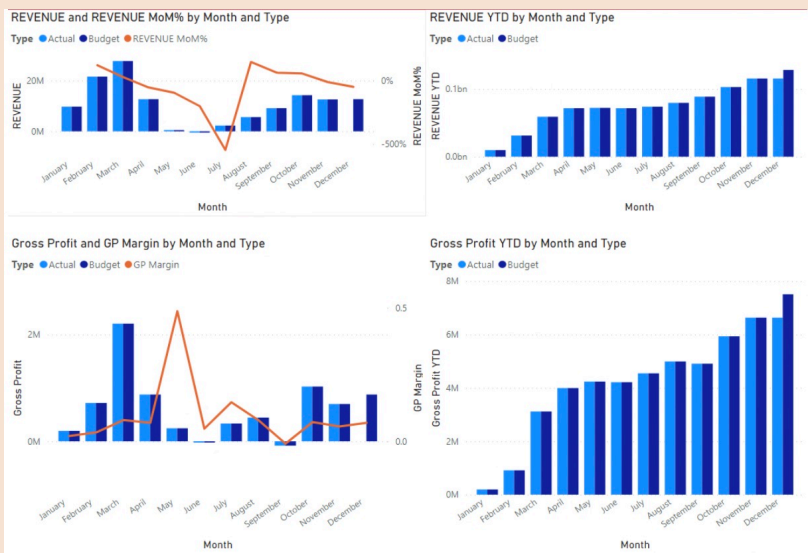


DASHBOARDING



The company used to have different dashboard for different portion of the financial statement. However, we managed to combined them together into just 1 dashboard. Therefore, giving the company ease of access.

VISUALIZATIONS



PREPARED BY:

EDMUND TAY, TING GUAN HENG, KEENAN LIM, MICHEAL LOH, MAX LEE & CHENG KERN HON .

